

Warm Springs

Madras

Metolius

Culver

Brooked
ver Ranch

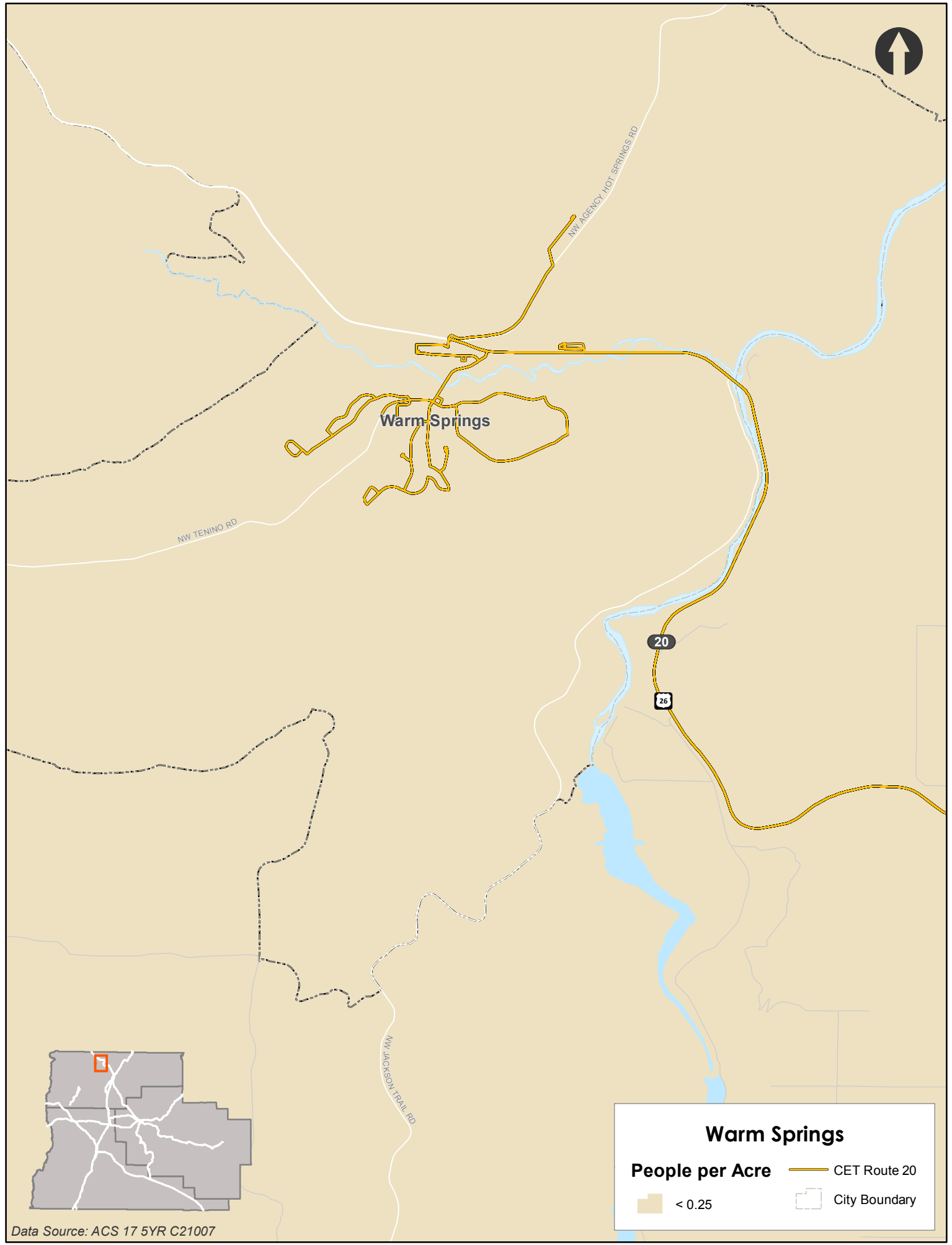
Jefferson County

People per Acre

- < 0.25
- 0.25 - 0.50

- CET Route 20
- CET Route 22
- City Boundary
- Dial-a-Ride Service Area

Data Source: ACS 17 5YR C21007



Warm Springs

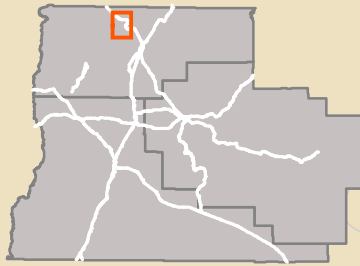
NW TENINO RD

NW AGENCY HOT SPRINGS RD

NW JACKSON TRAIL RD

20

26

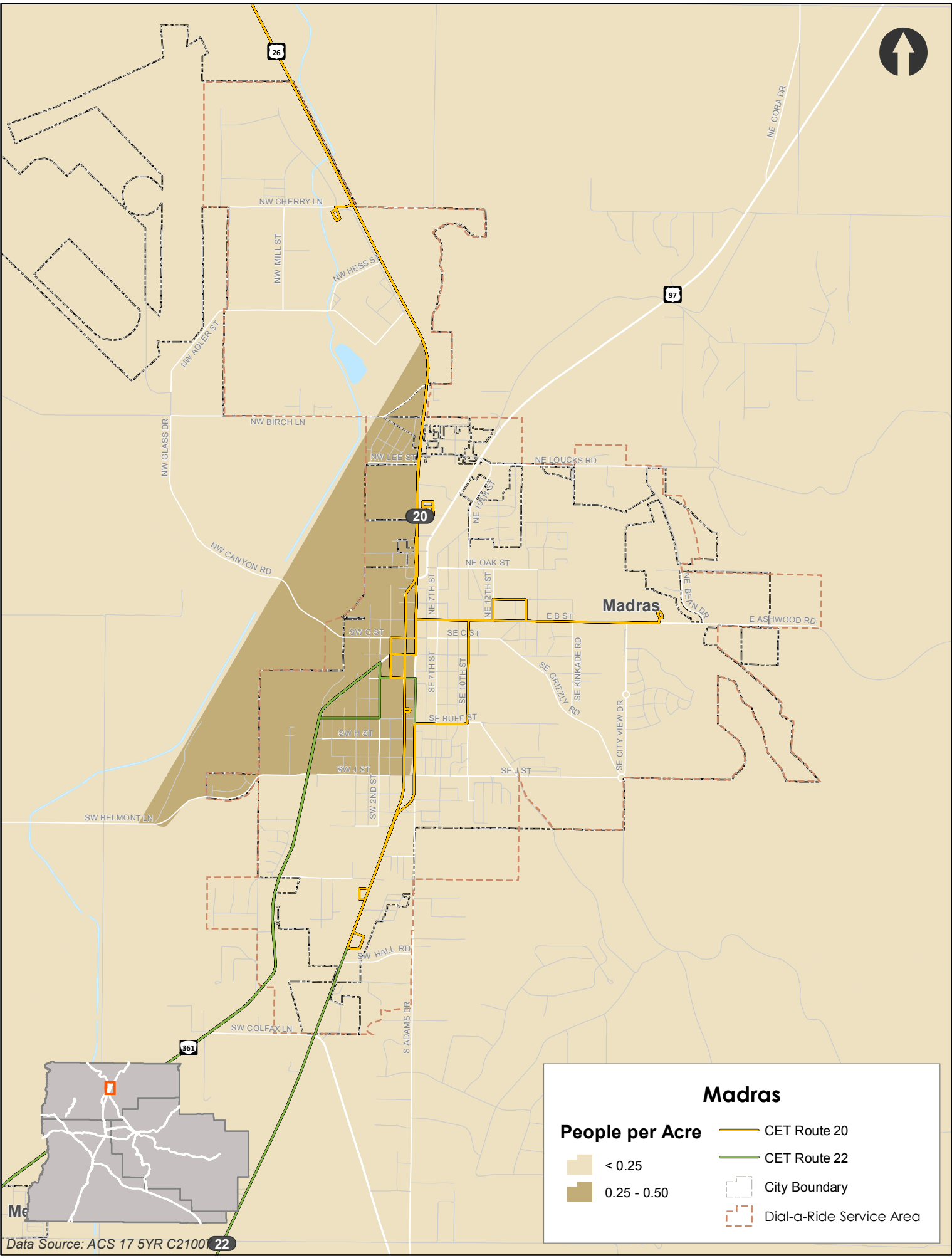


Warm Springs



People per Acre

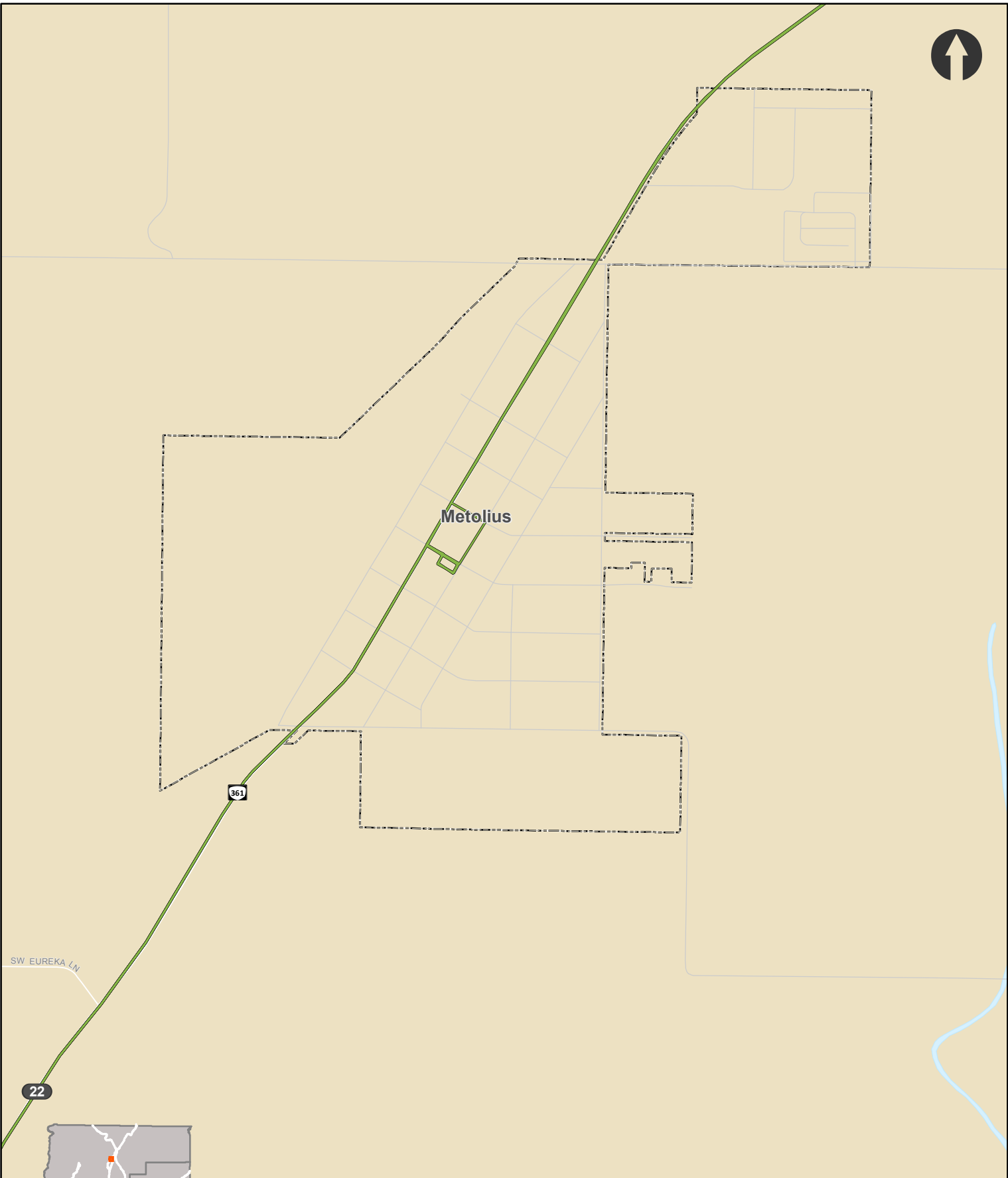
- < 0.25
- CET Route 20
- City Boundary

Data Source: ACS 17 5YR C21007



Madras

Madras	
People per Acre	— CET Route 20
 < 0.25	— CET Route 22
 0.25 - 0.50	⬜ City Boundary
	⬜ Dial-a-Ride Service Area

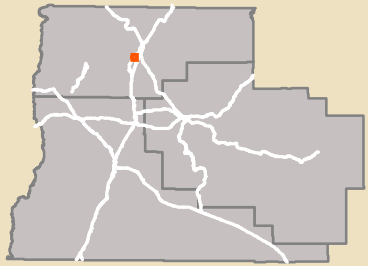


Metolius

SW EUREKA LN

22

361



Metolius

People per Acre

- < 0.25

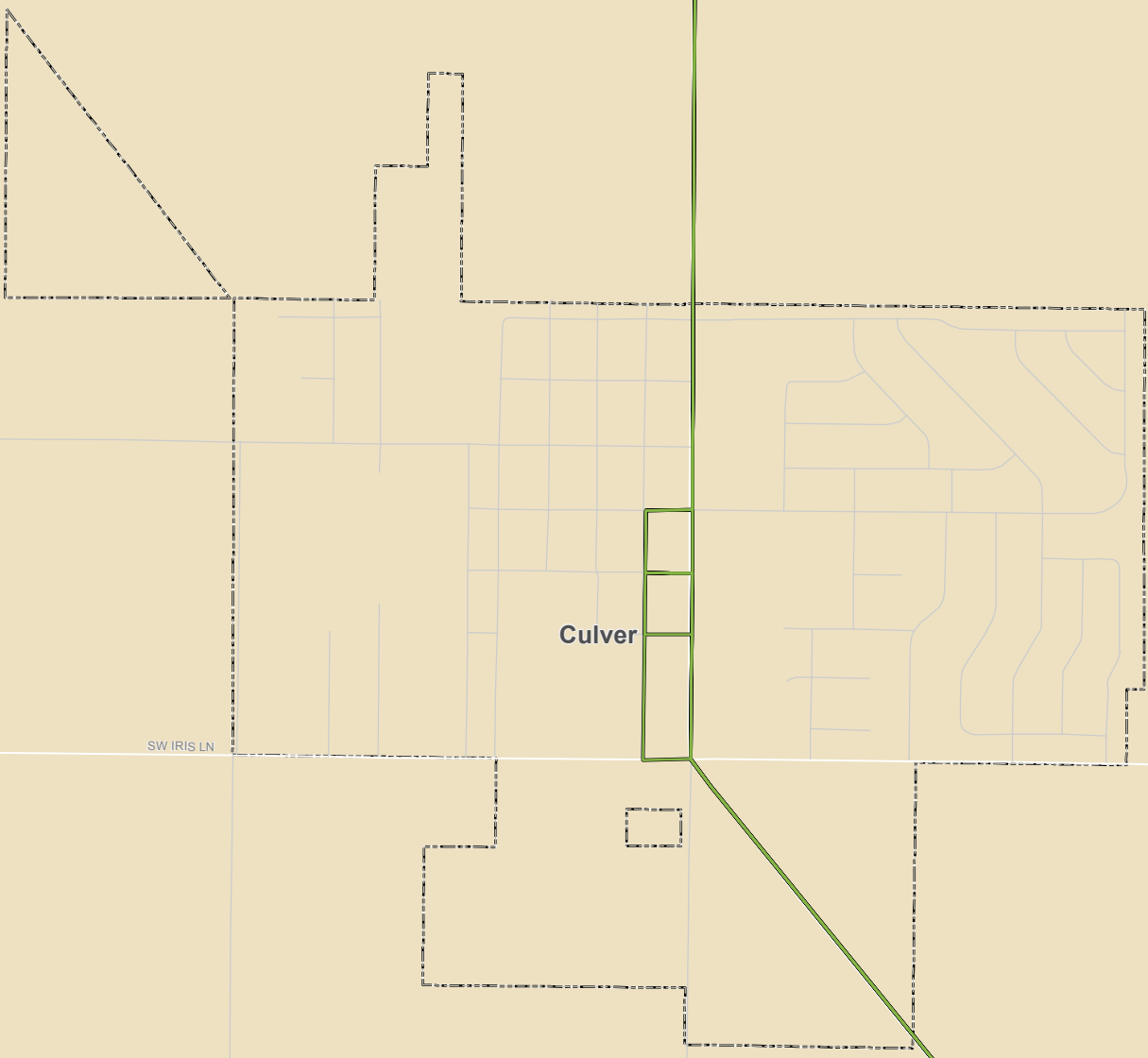
CET Route 22

City Boundary

Data Source: ACS 17 5YR C21007



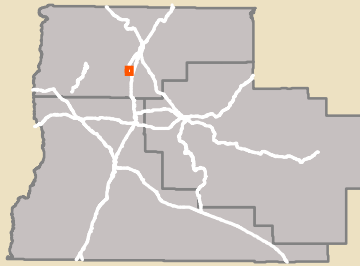
22



Culver

SW IRIS LN

361

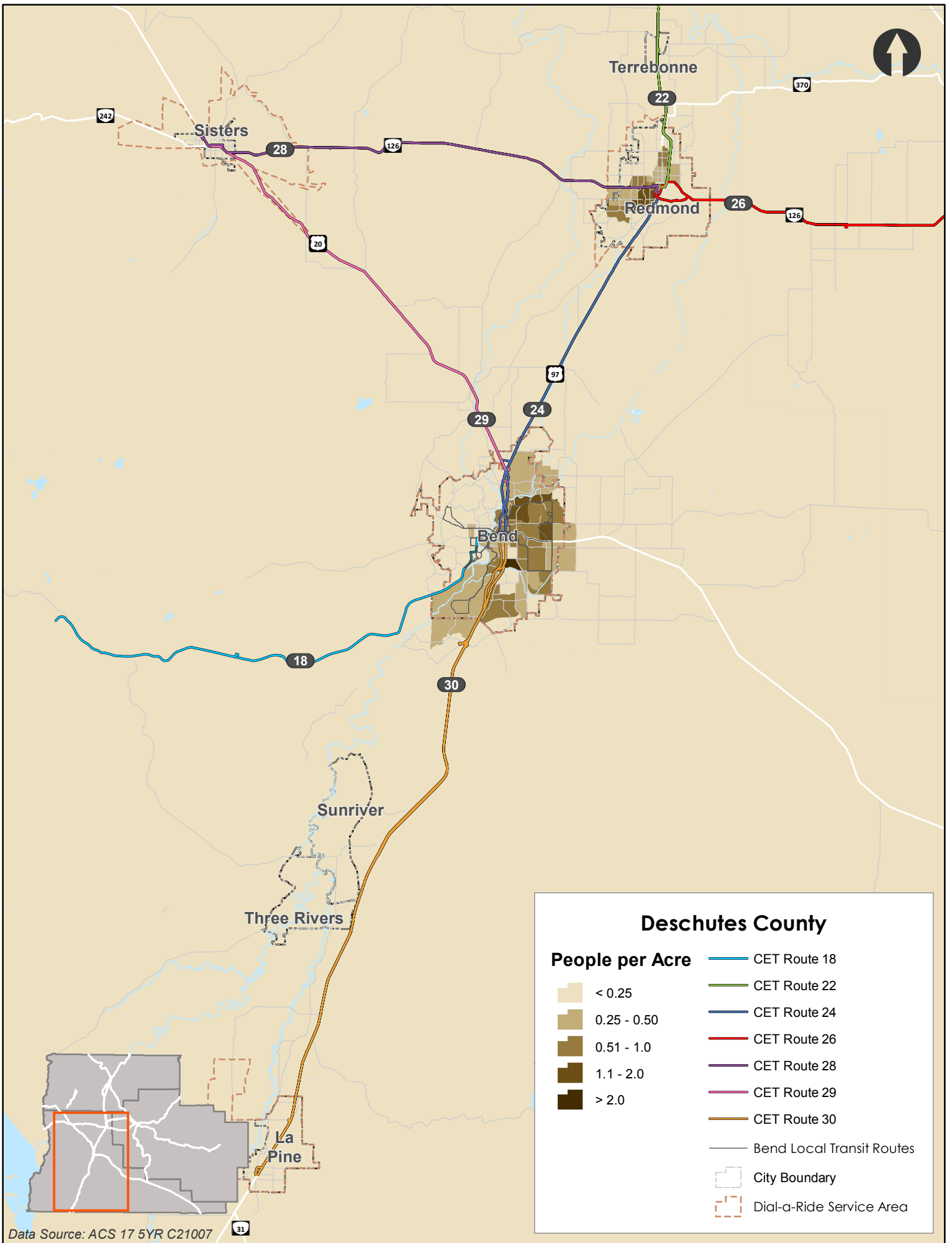


Culver

People per Acre

- < 0.25
- CET Route 22
- City Boundary

Data Source: ACS 17 5YR C21007

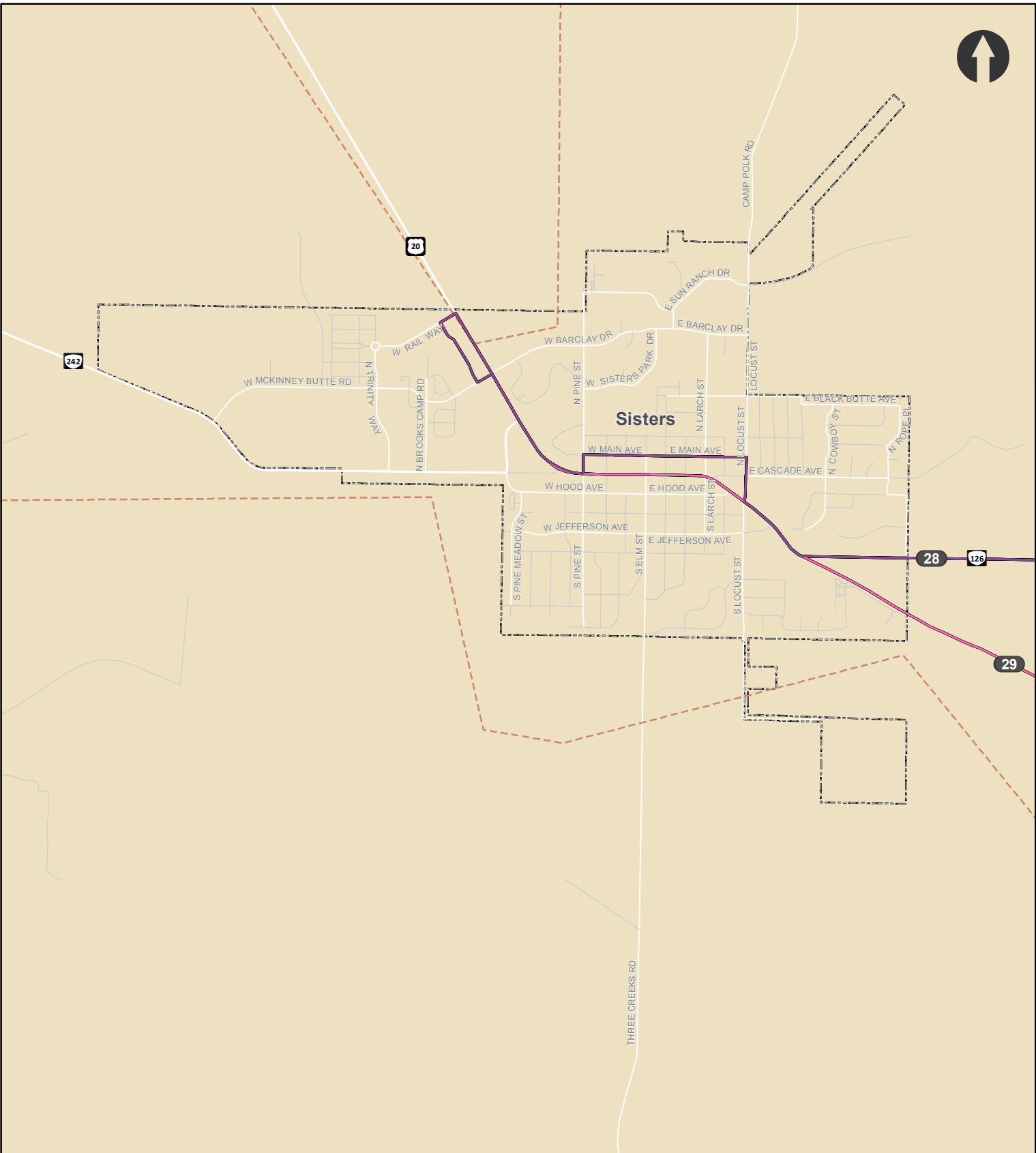


Deschutes County

People per Acre

- < 0.25
- 0.25 - 0.50
- 0.51 - 1.0
- 1.1 - 2.0
- > 2.0

- CET Route 18
- CET Route 22
- CET Route 24
- CET Route 26
- CET Route 28
- CET Route 29
- CET Route 30
- Bend Local Transit Routes
- City Boundary
- Dial-a-Ride Service Area

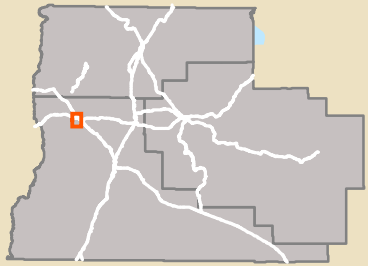


Sisters

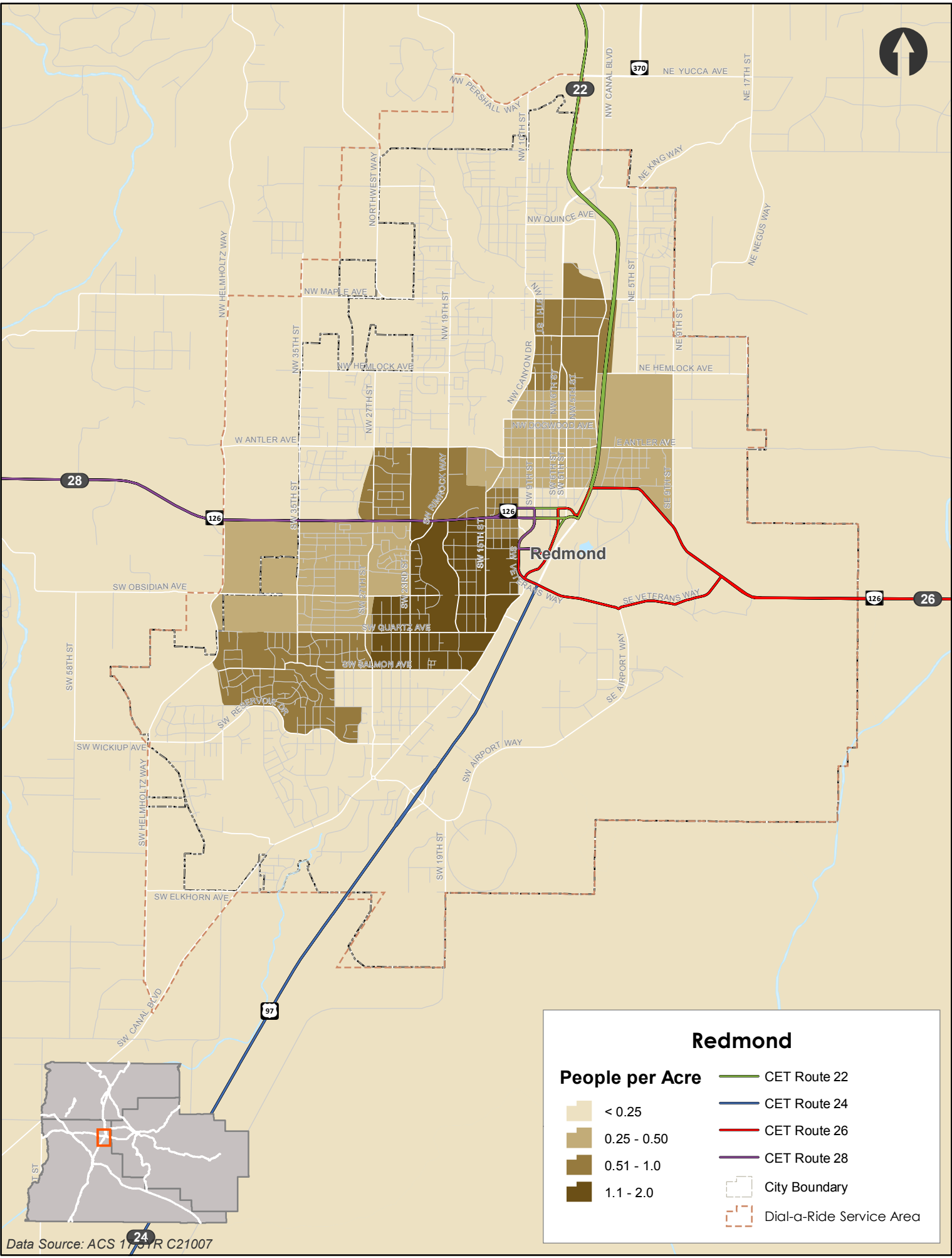
People per Acre

- < 0.25

- CET Route 28
- CET Route 29
- City Boundary
- Dial-a-Ride Service Area

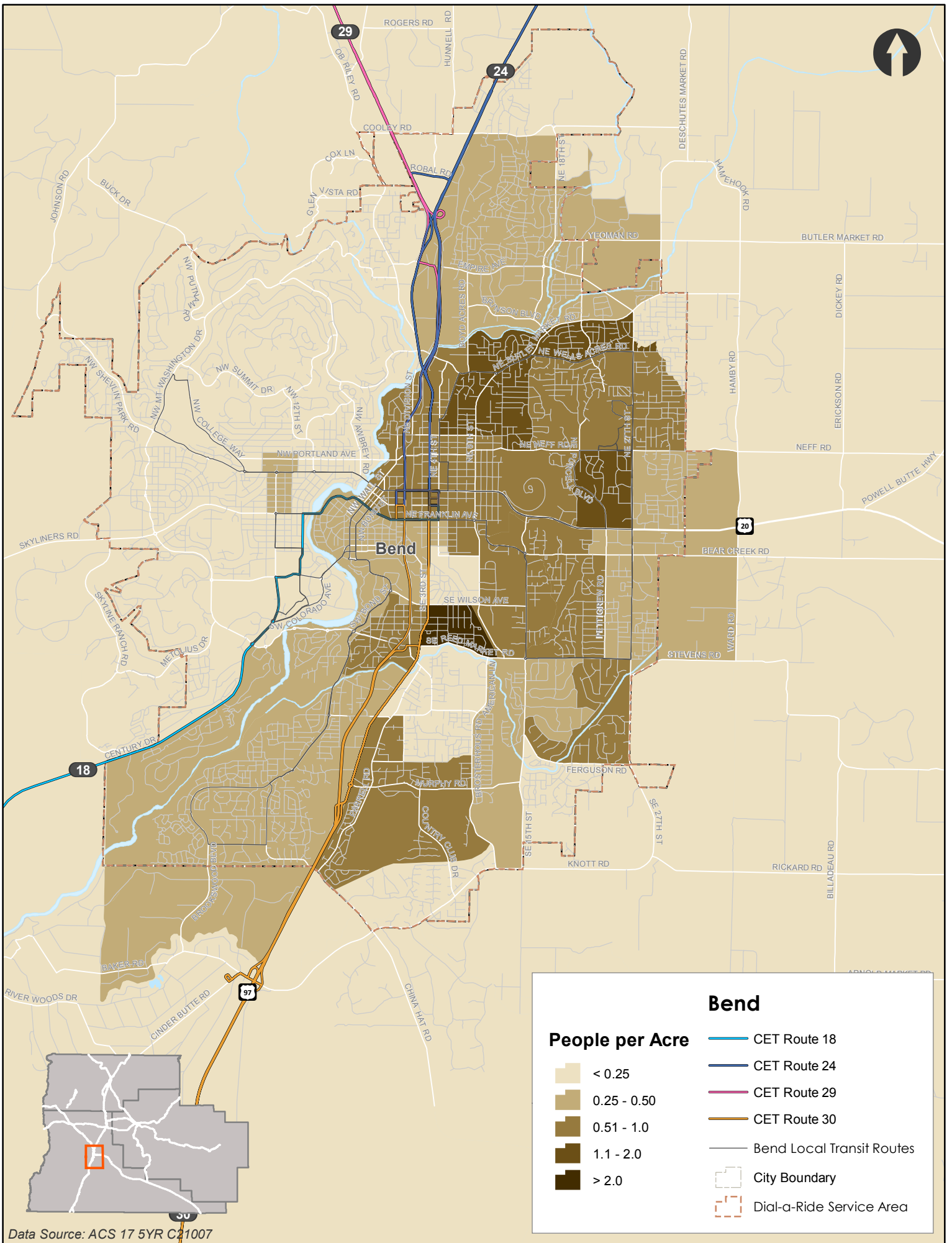


Data Source: ACS 17 5YR C21007

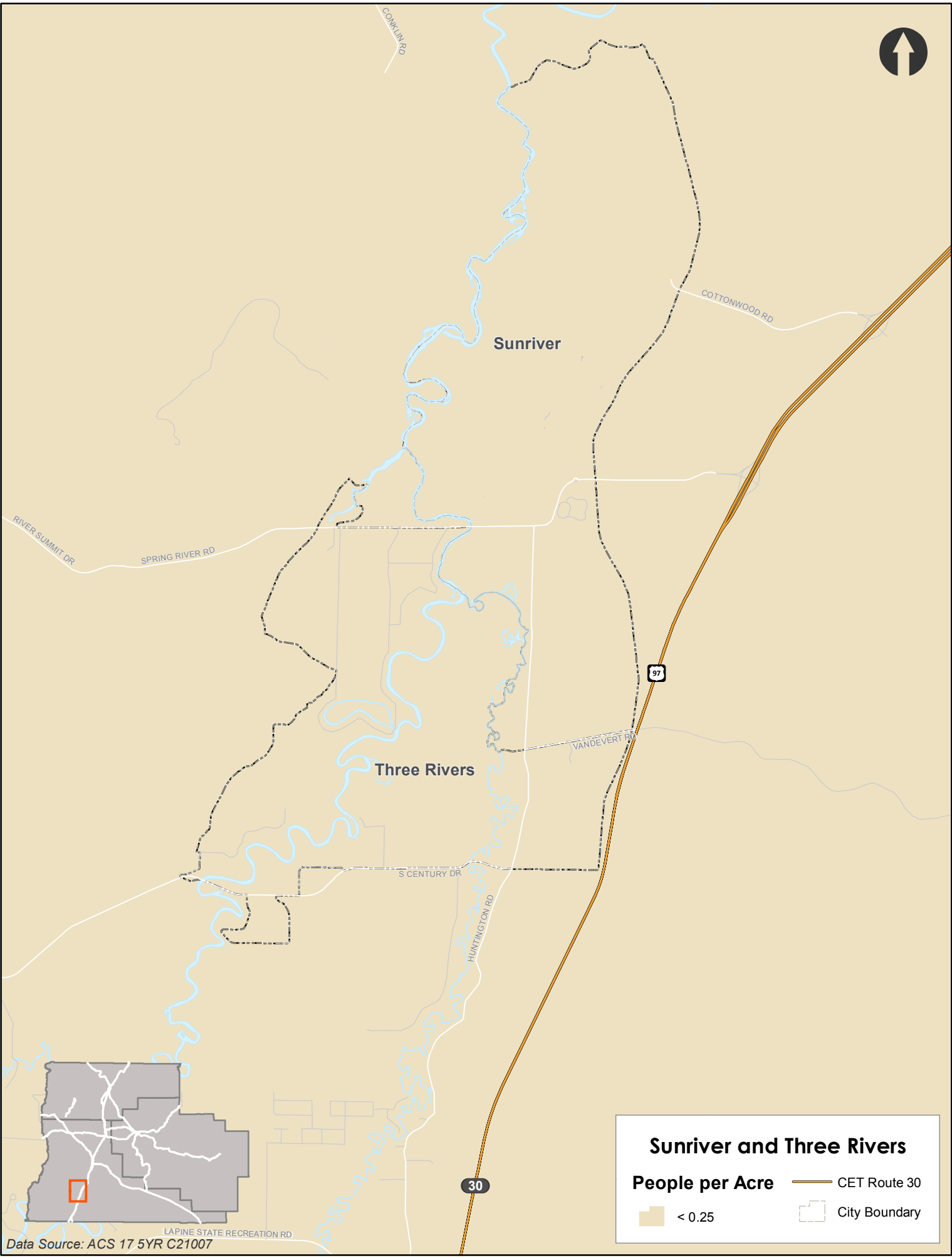


Redmond

People per Acre	CET Route 22
< 0.25	CET Route 24
0.25 - 0.50	CET Route 26
0.51 - 1.0	CET Route 28
1.1 - 2.0	City Boundary
	Dial-a-Ride Service Area



Data Source: ACS 17 5YR C21007



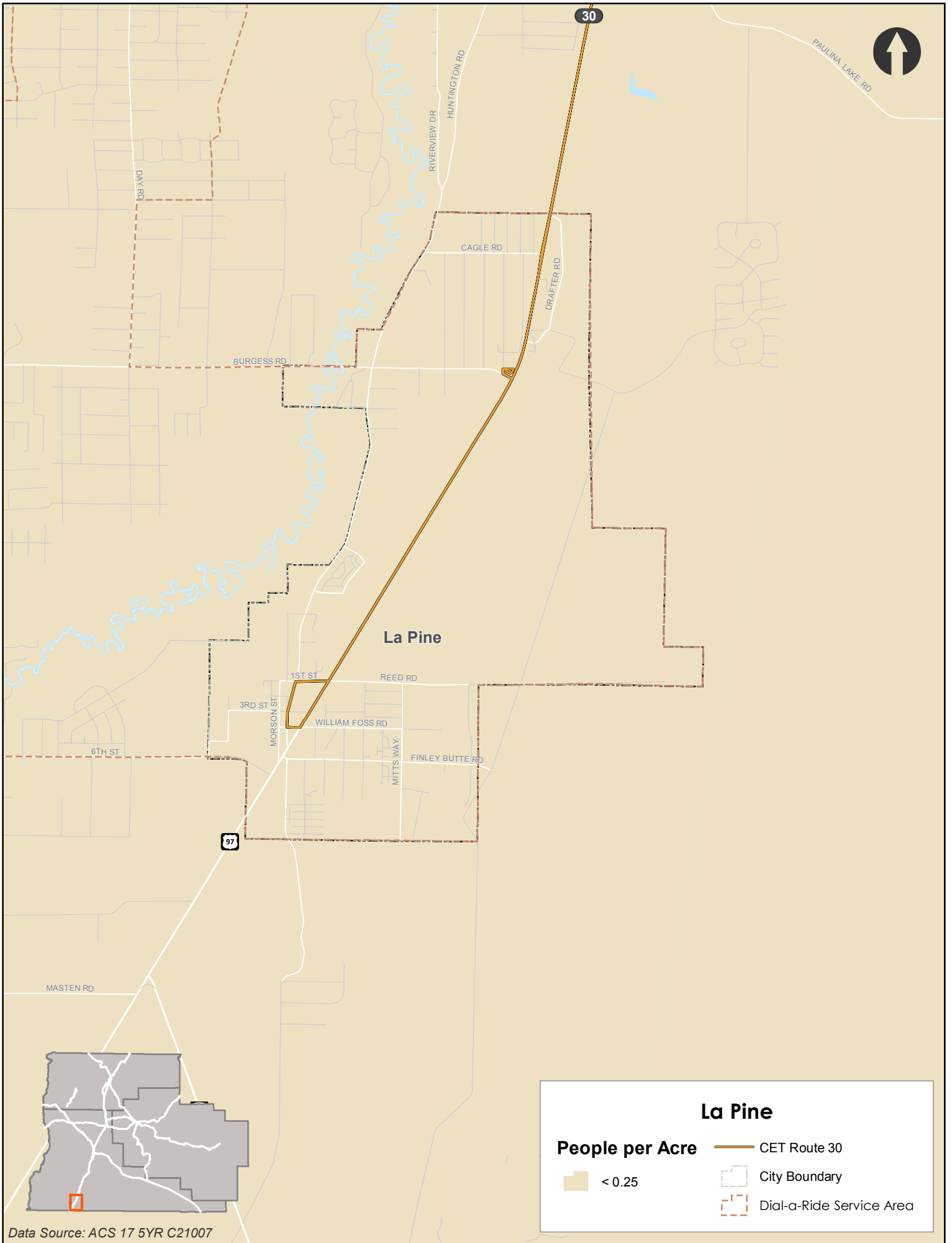
Sunriver

Three Rivers

Sunriver and Three Rivers

- People per Acre
- < 0.25
- CET Route 30
- City Boundary

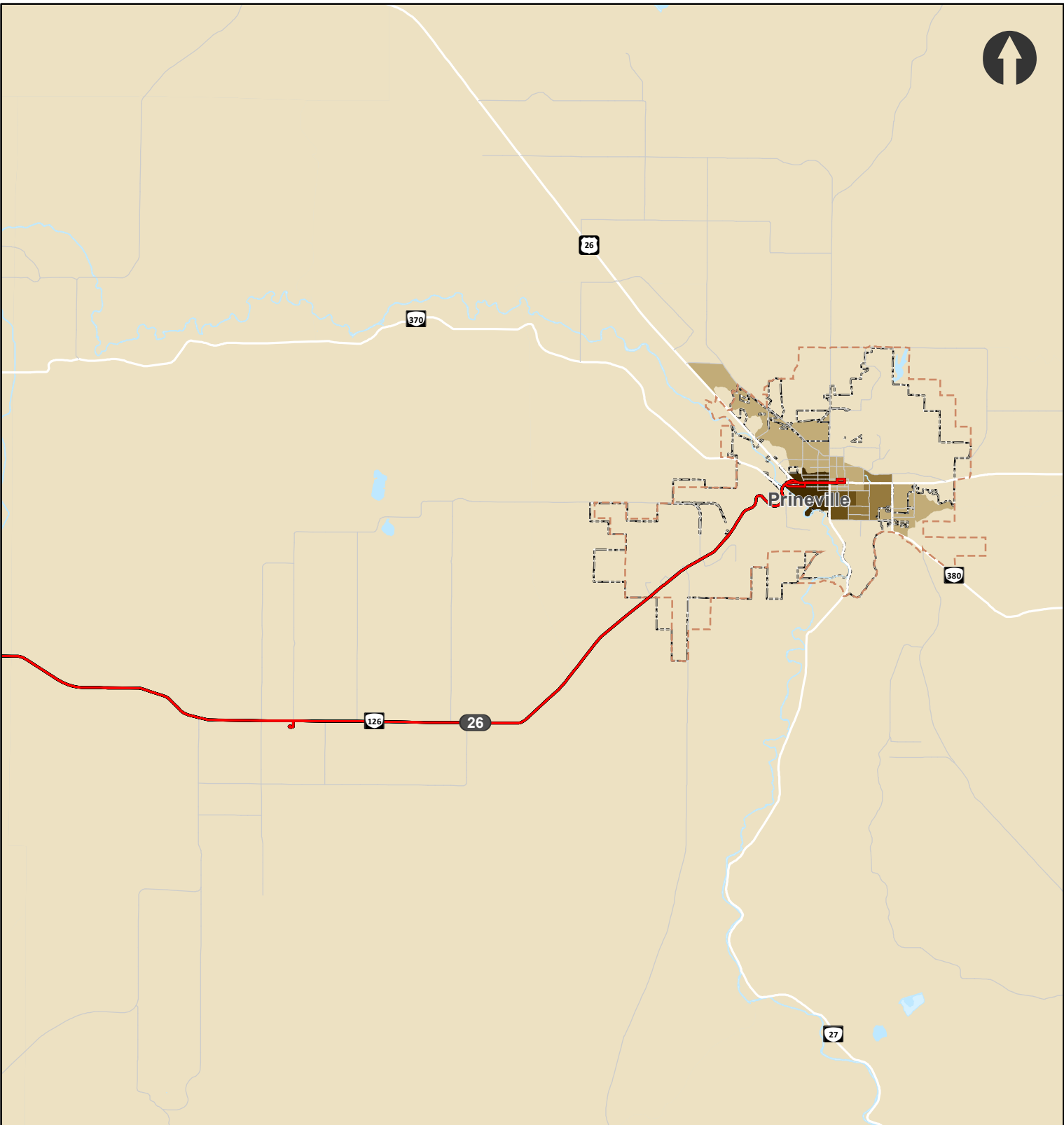
Data Source: ACS 17 5YR C21007



La Pine

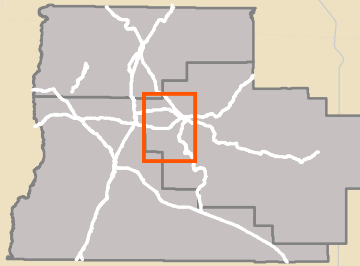
La Pine	
People per Acre	CET Route 30
< 0.25	City Boundary
	Dial-a-Ride Service Area

Data Source: ACS 17 5YR C21007

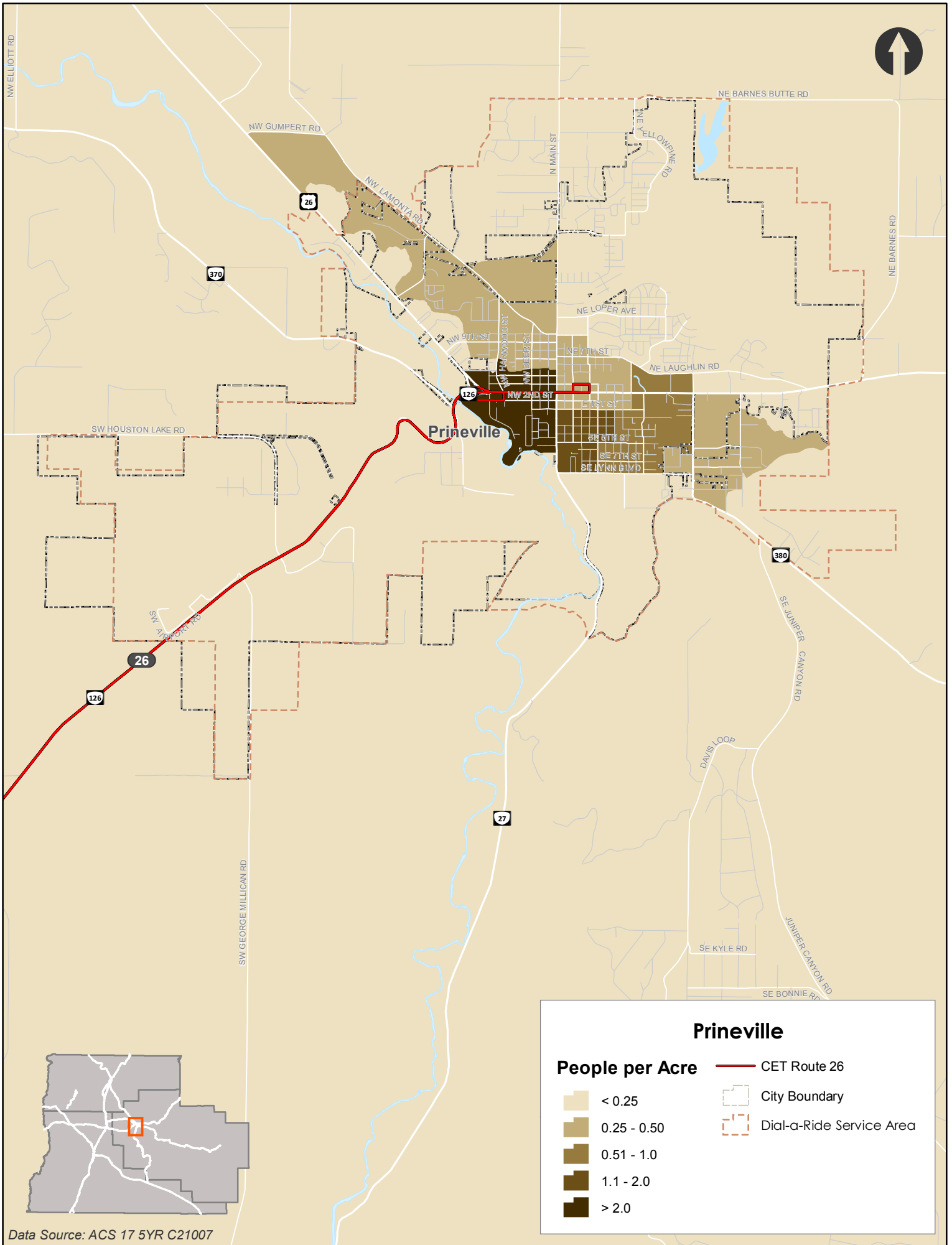


Crook County

People per Acre	CET Route 26
< 0.25	City Boundary
0.25 - 0.50	Dial-a-Ride Service Area
0.51 - 1.0	
1.1 - 2.0	
> 2.0	



Data Source: ACS 17 5YR C21007



Data Source: ACS 17 5YR C21007

Prineville

People per Acre	CET Route 26
< 0.25	City Boundary
0.25 - 0.50	Dial-a-Ride Service Area
0.51 - 1.0	
1.1 - 2.0	
> 2.0	