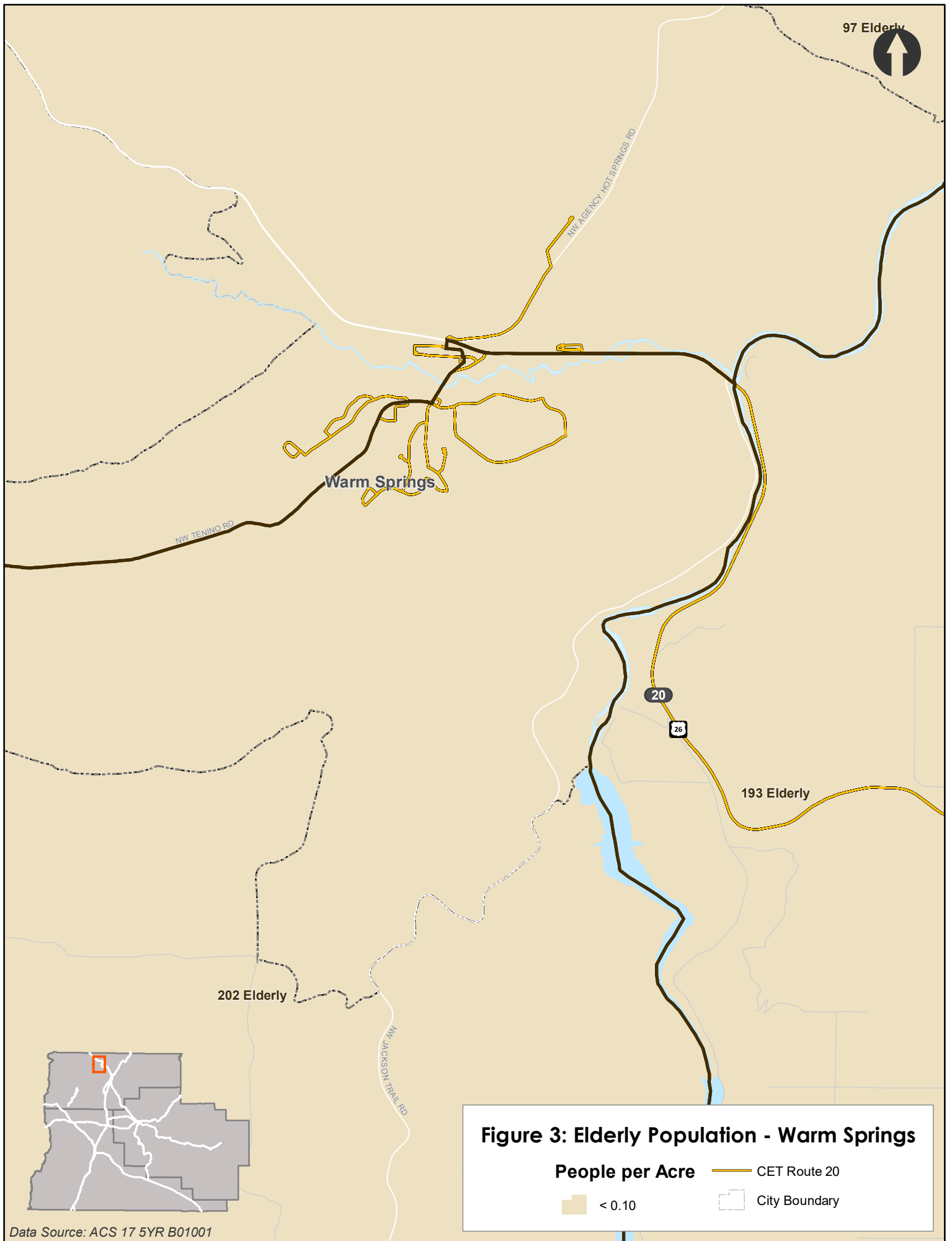


Figure 3: Elderly Population - Jefferson County

People per Acre

- < 0.10
- 0.10 - 0.50

- CET Route 20
- CET Route 22
- City Boundary
- Dial-a-Ride Service Area



97 Elderly

Warm Springs

NW TENINO RD

NW AGENCY HOT SPRINGS RD

20

26

193 Elderly

202 Elderly

NW JACKSON TRAIL RD

Figure 3: Elderly Population - Warm Springs

People per Acre — CET Route 20
 < 0.10 - - - City Boundary

Data Source: ACS 17 5YR B01001

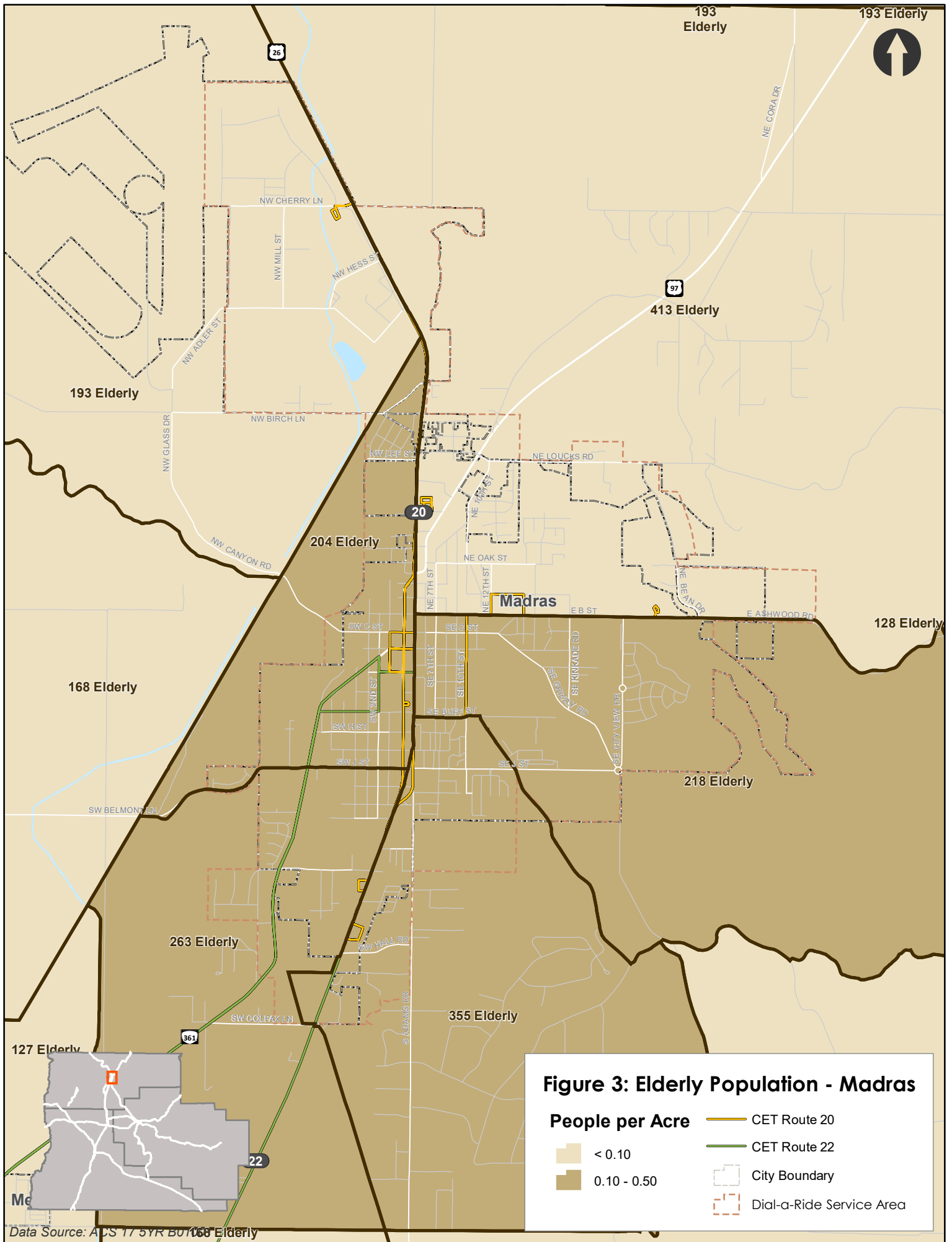


Figure 3: Elderly Population - Madras

People per Acre

- <math>< 0.10</math>
- $0.10 - 0.50$
- CET Route 20
- CET Route 22
- City Boundary
- Dial-a-Ride Service Area

Data Source: ACS 17 5YR B0168 Elderly



168 Elderly

Metolius

127 Elderly

SW EUREKA LN

361

22

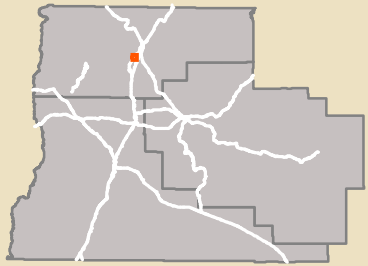
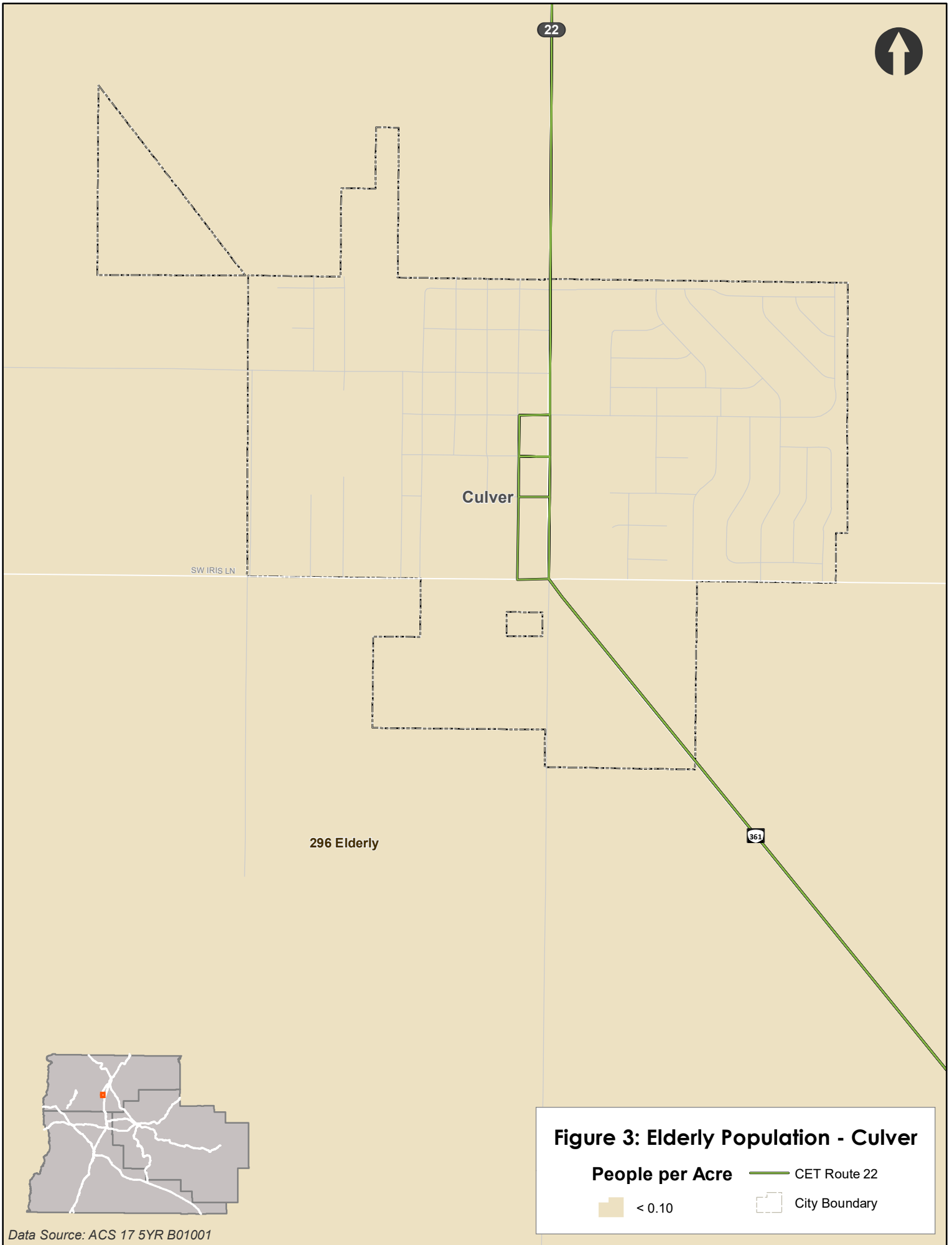
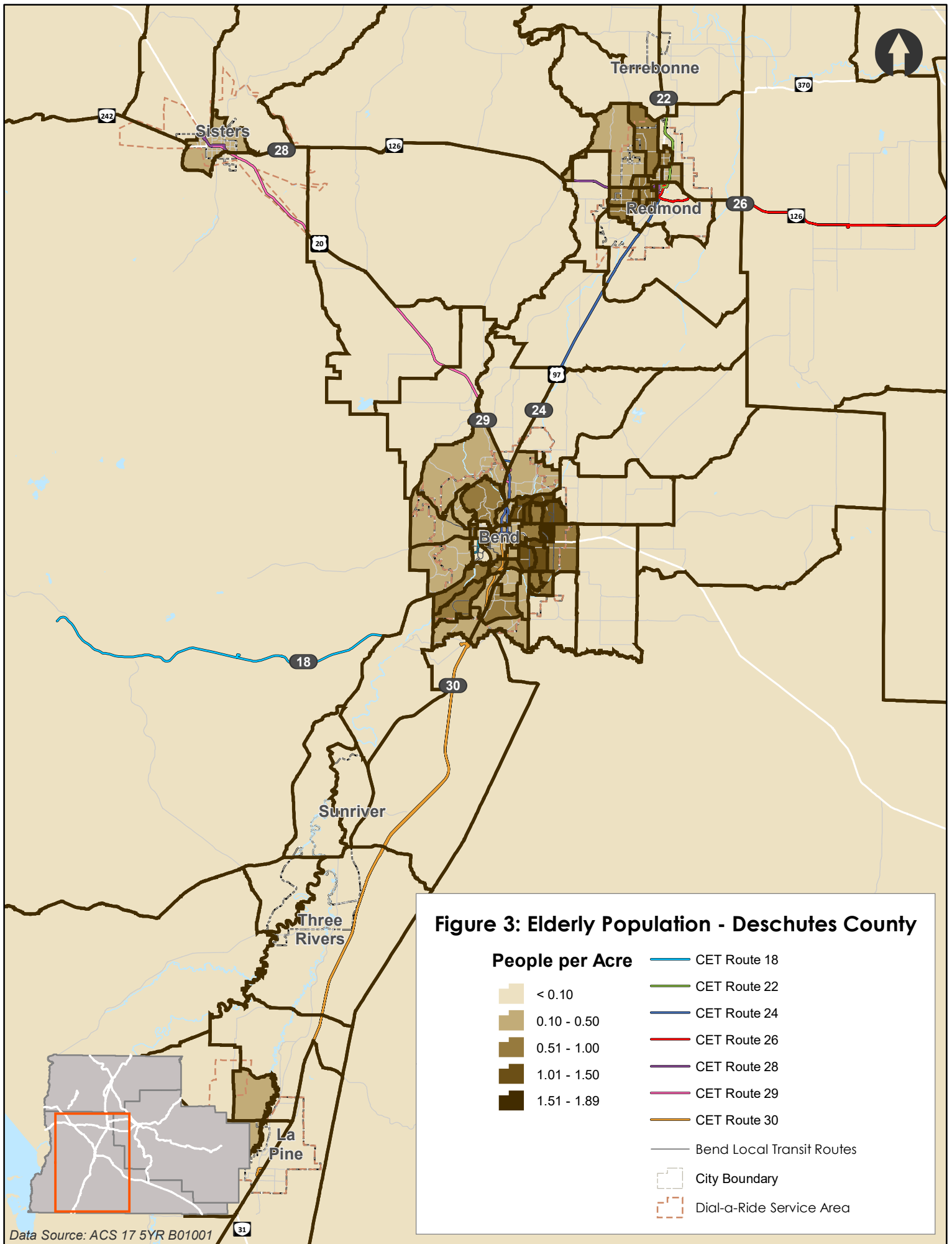


Figure 3: Elderly Population - Metolius
People per Acre — CET Route 22
 < 0.10 City Boundary

Data Source: ACS 17 5YR B01001





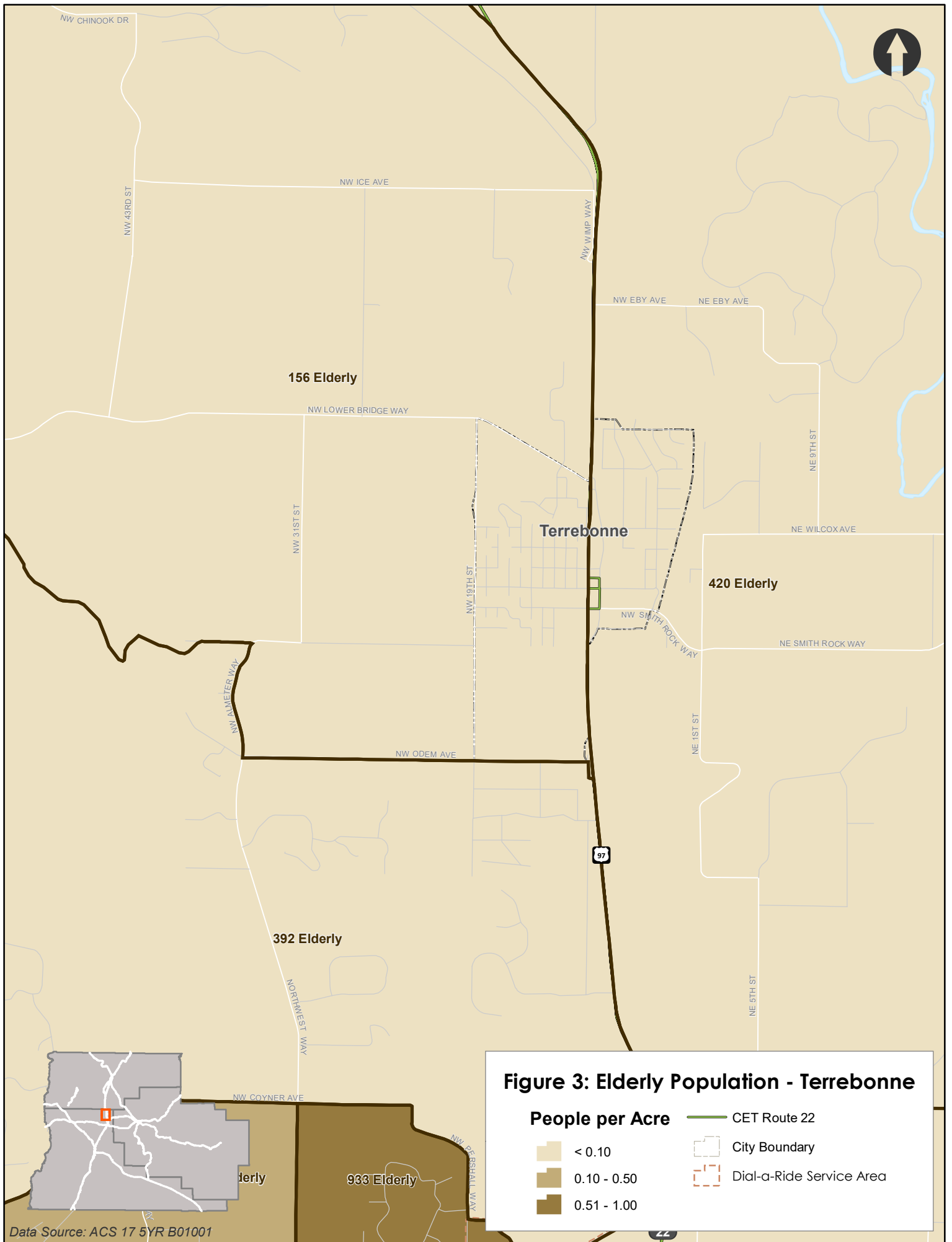


Figure 3: Elderly Population - Terrebonne

People per Acre

- < 0.10
- 0.10 - 0.50
- 0.51 - 1.00

- CET Route 22
- City Boundary
- Dial-a-Ride Service Area

Data Source: ACS 17 5YR B01001

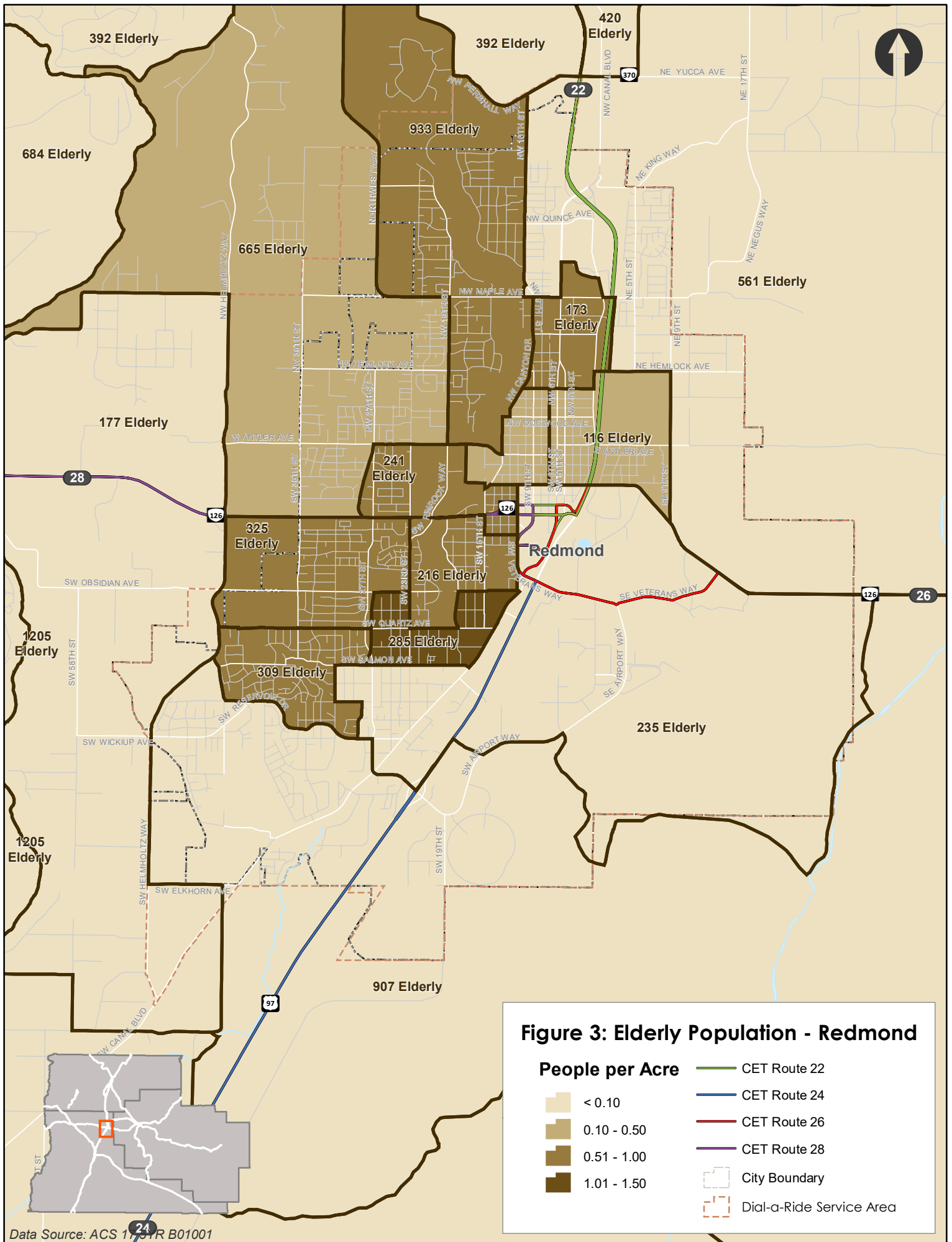
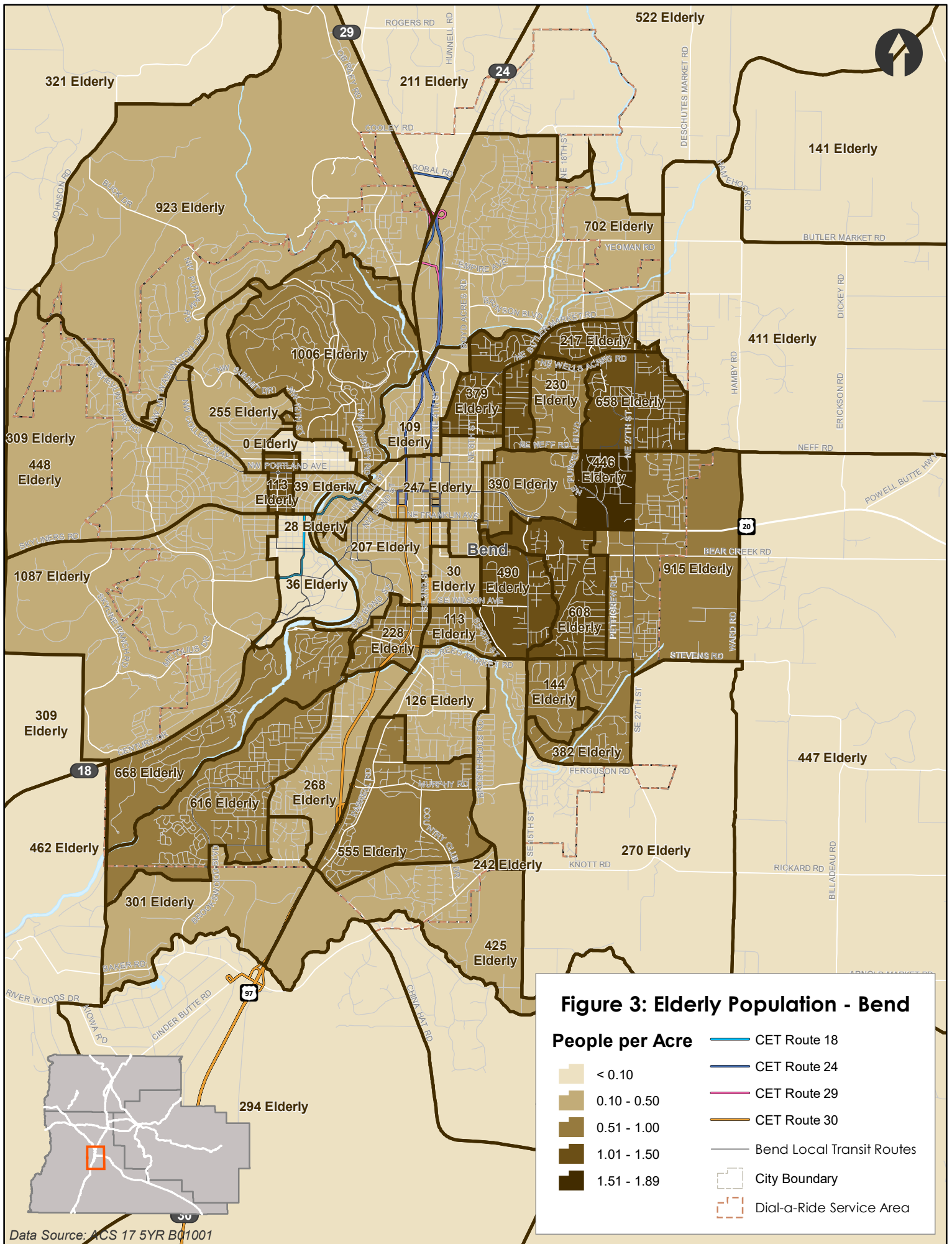


Figure 3: Elderly Population - Redmond

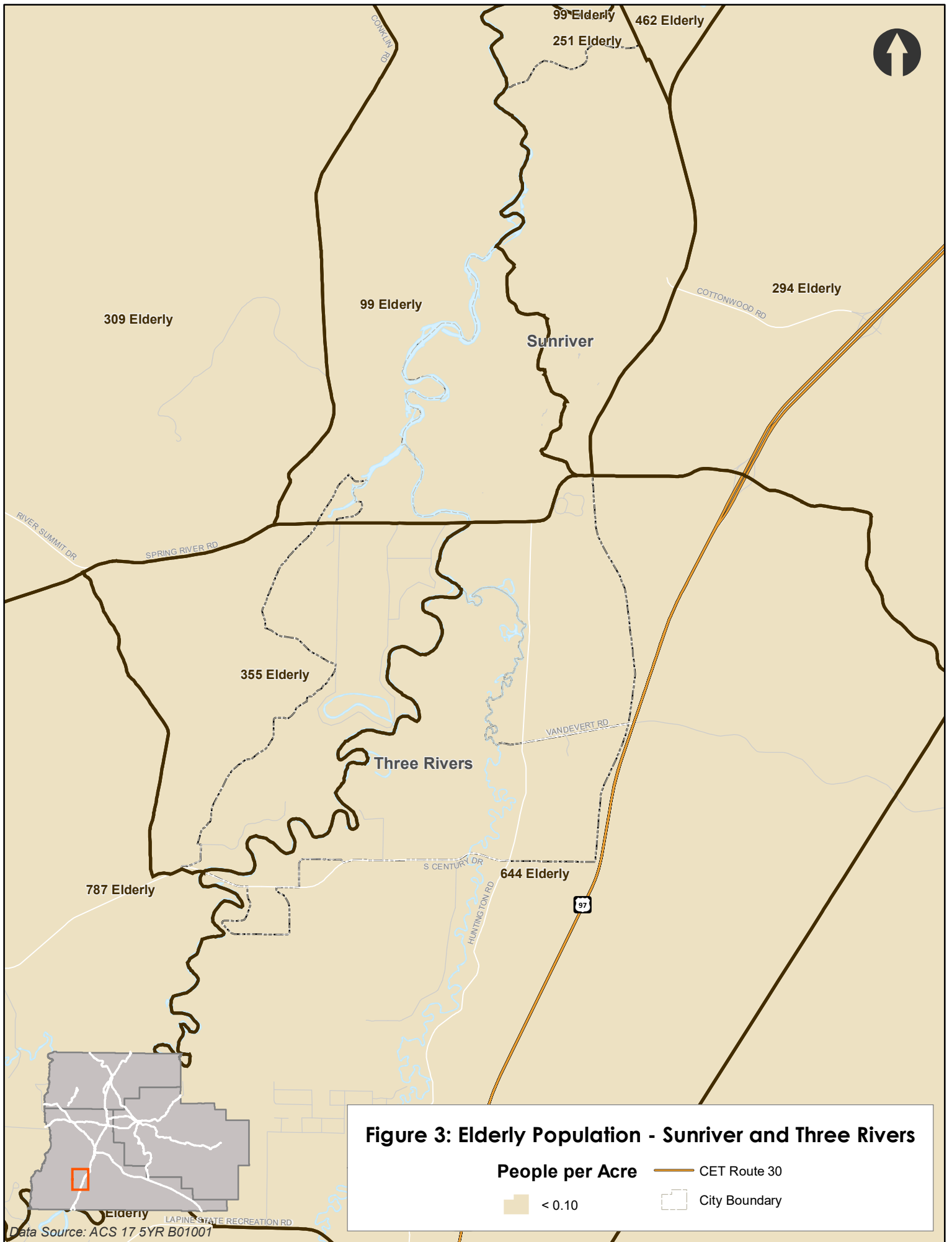
People per Acre

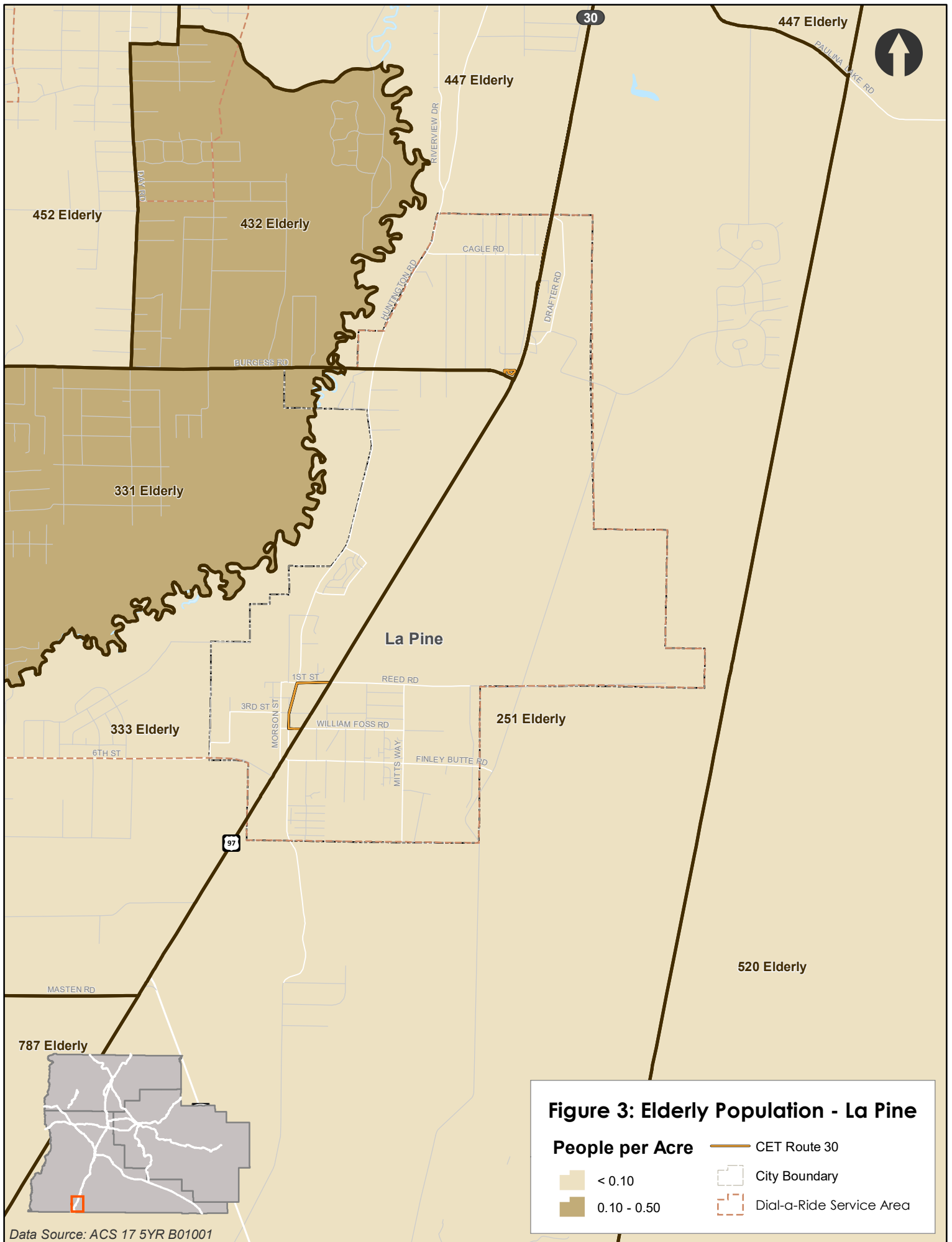
- <math>< 0.10</math>
- 0.10 - 0.50
- 0.51 - 1.00
- 1.01 - 1.50

- CET Route 22
- CET Route 24
- CET Route 26
- CET Route 28
- City Boundary
- Dial-a-Ride Service Area

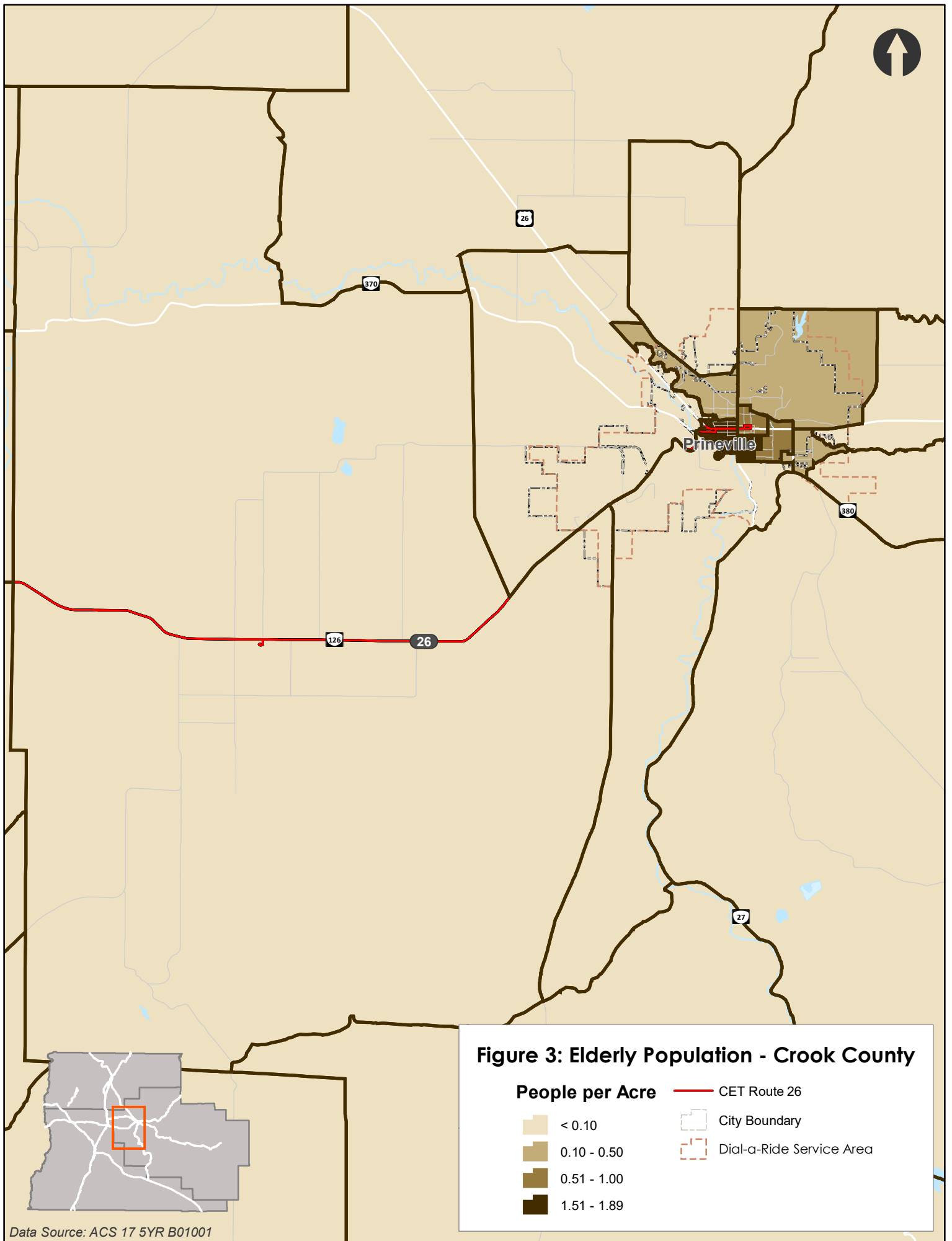


Data Source: ACS 17 5YR B01001





Data Source: ACS 17 5YR B01001



Data Source: ACS 17 5YR B01001

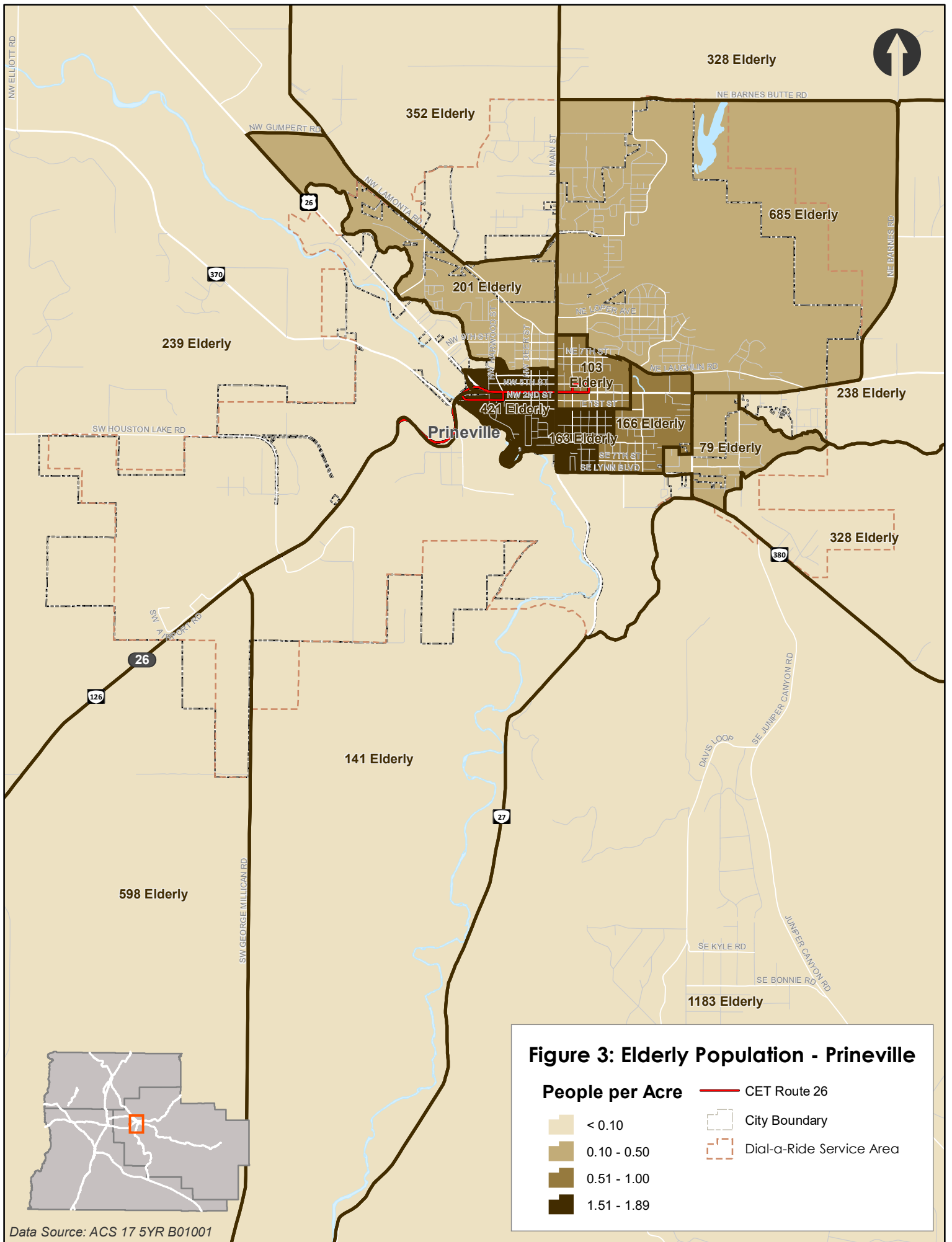


Figure 3: Elderly Population - Prineville

People per Acre

- < 0.10
- 0.10 - 0.50
- 0.51 - 1.00
- 1.51 - 1.89

CET Route 26

City Boundary

Dial-a-Ride Service Area

Data Source: ACS 17 5YR B01001